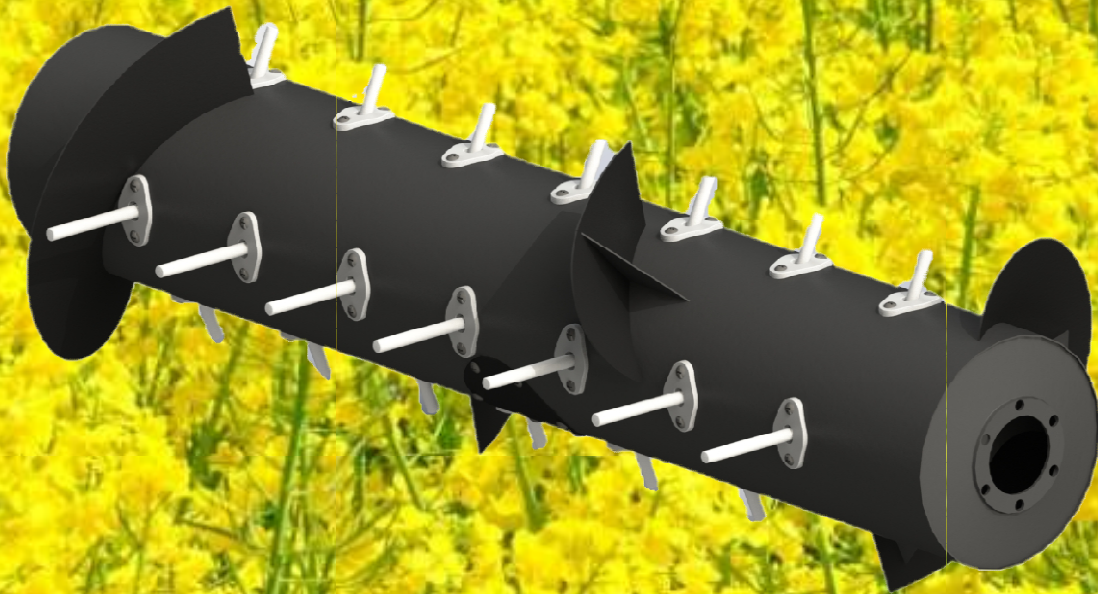


TURBODRUM

Installation Instructions

CA-25



Instructions for replacing the MacDon CA25 Drum with the TurboDrum upgrade kit.



Removing Original Drum

1. Remove Plastic Cover from Drive Chain on LHS.



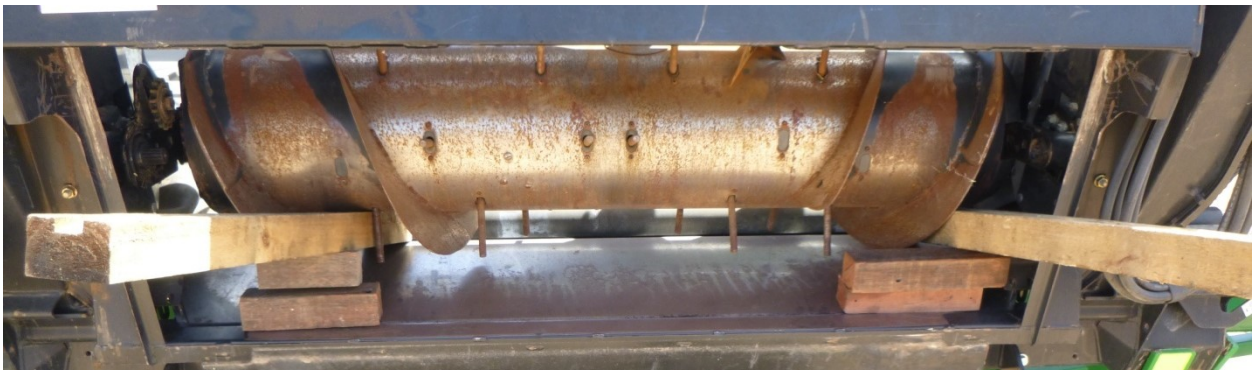
2. Remove the Idler Sprocket and Drive Chain.



3. If you have an endless chain you will need to slide the drive sprocket off the drive shaft with the chain on it.



4. Put blocks of wood under each end of the Drum or use ratchet straps to hold it in position.



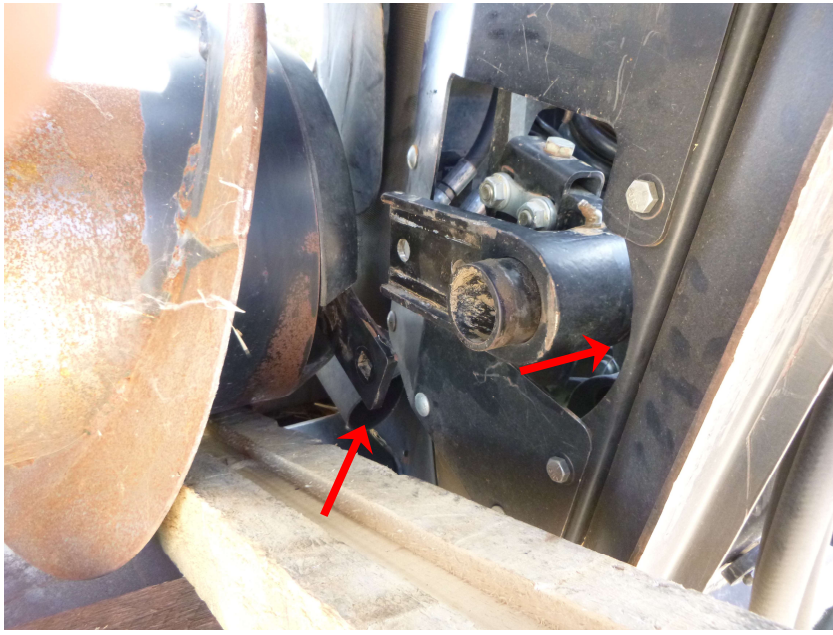
5. Remove the 2 mount bolts on the LH side.



6. Remove the 2 mount bolts on the RH side.



7. Push RHS Mounting Bracket towards RH End to clear Mount Arm.



8. Push RHS of Drum forward.



9. Push Drum towards RHS to clear Chain Drive on LHS.



10. Slide Drum off LHS first (Forklift or Telehandler is recommended).
11. Remove the Drum from header front and place on sturdy surface.
12. Remove LH end out of Drum by removing the 6 Bolts from around the outside.



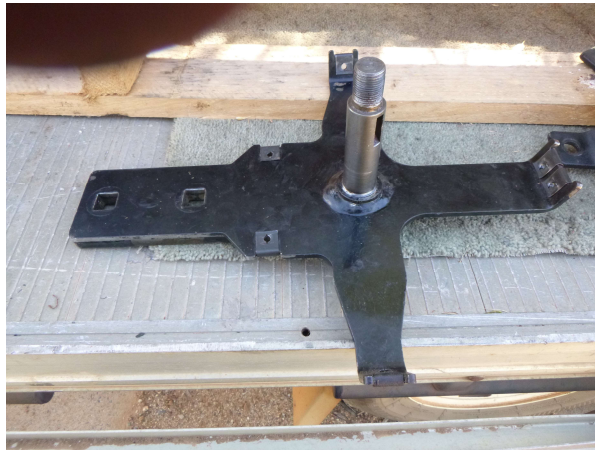
13. Remove Nut off Center Shaft.



14. Remove Crank Arm off Mount Arm Shaft.



15. Remove LH Mount Arm off Sprocket Hub.

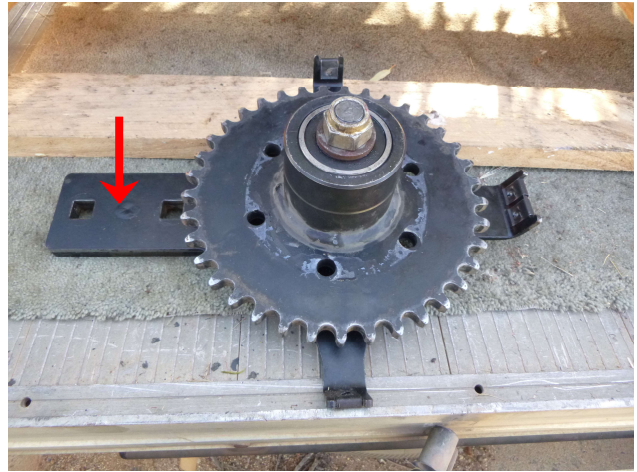
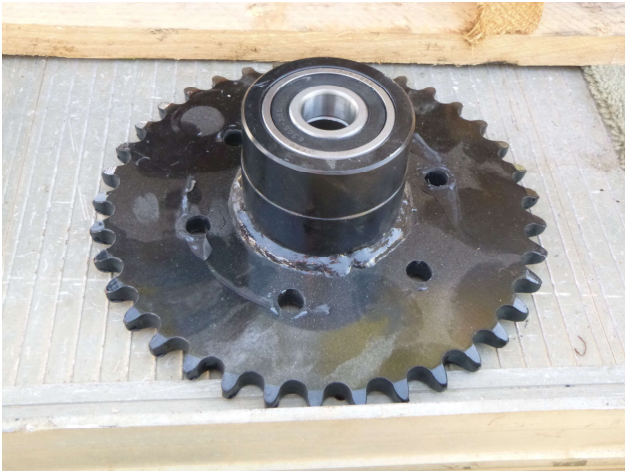


16. Cut centre hole in RH plastic cover to 78mm in diameter.



Installing New TurboDrum

1. Remove sprocket from Turbodrum and attach to Mount Arm.



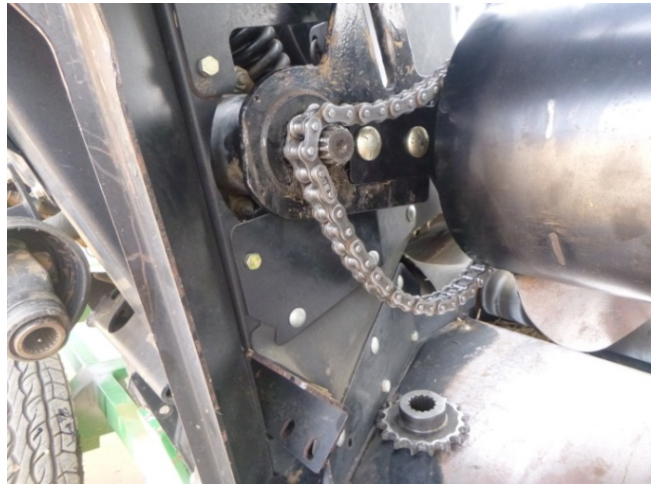
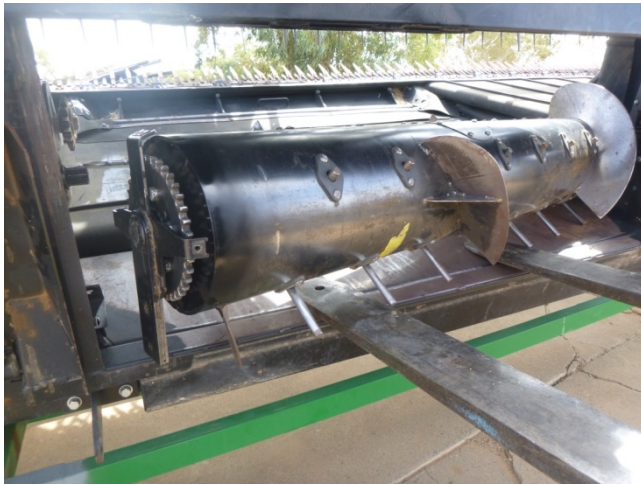
2. Fit Mount Arm Assembly to Turbodrum with 6 Bolts from supplied sprocket.



3. Using a Forklift or Telehandler, lift TurboDrum with Sprocket positioned on the LHS.
4. Angle the TurboDrum on the forks with the LHS to the back.



5. Slide the TurboDrum off the forks into the front with the RHS going in first.



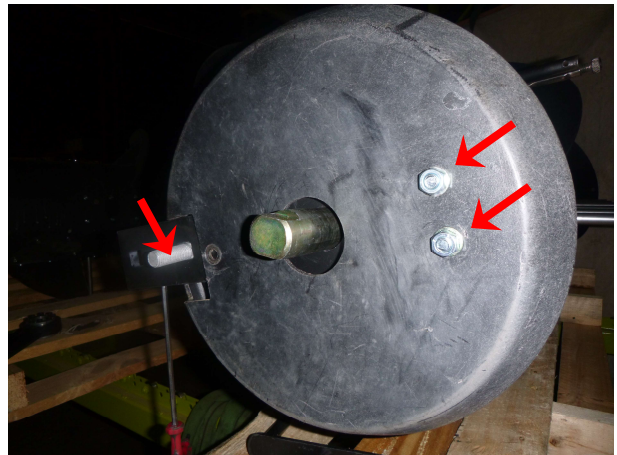
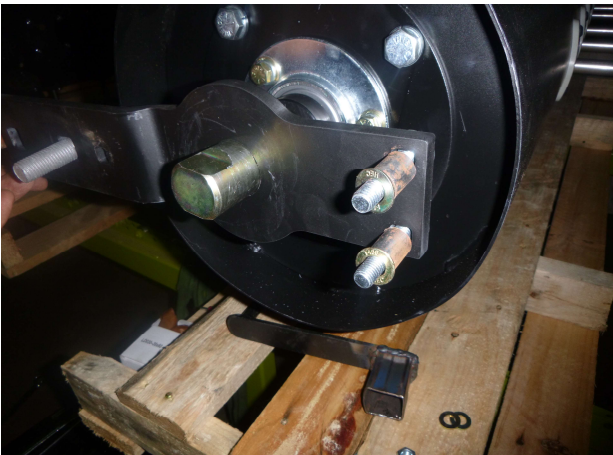
(Endless chains will need to be fitted to the Drum Sprocket and Drive Shaft Sprocket on Drive Shaft before fitting bolts to Mount Arm on LHS)

6. Put a block of wood under LHS and RHS.



7. Use wood to lift Turbodrum and put one bolt in LHS Mount Arm.

8. Fit Plastic Cover to RHS Mount Arm with 2 10mm x 50mm cuphead bolts, spacers and washers. Put 16mm x 50mm cuphead bolt through inner hole of arm and slide arm onto shaft.



9. Fit Finger Timing Plate to RH end with round boss through Plastic Cover.



10. Put outer bolt in RHS Mount Arm. Put 50mm Flat Washer and flange nut on inner bolt. Tighten outer bolt.

11. Put second bolt in LHS Mount Arm and tighten both bolts.

Setting Finger Timing

12. Turn the Finger Timing Plate fully clockwise to the end of the slot and tighten inner bolt nut.



13. Turn Turbodrums to have one row of retractable fingers at 3 o'clock and hold to stop drum from turning. (Fingers point straight out of the front)

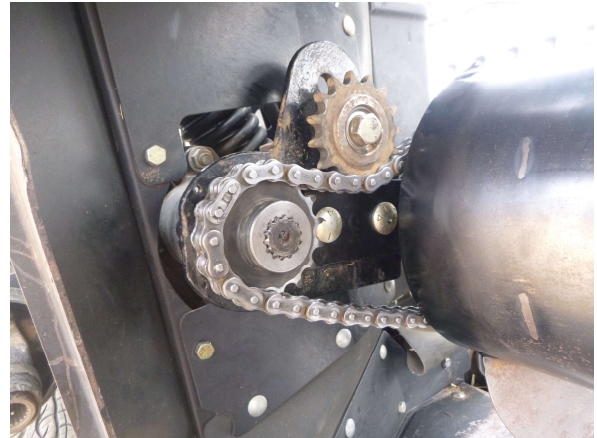
14. Using a spanner, turn crankshaft from flats on RH end to ensure fingers are fully extended at 3 o'clock.

15. Put a set of multigrips on one finger on top row and remove spanner from end of shaft.



16. Tighten the eight allen key screws in a circular pattern until all are tight. May need to go around 7 or 8 times.

17. For non-endless chains, fit chain, idler sprocket and set chain tension.



18. Fit plastic covers to LHS over the drive chain.

19. Turn Turbodrum over and check clearances.

20. Check all nuts, bolts and bearings are tightened and secure before operation.