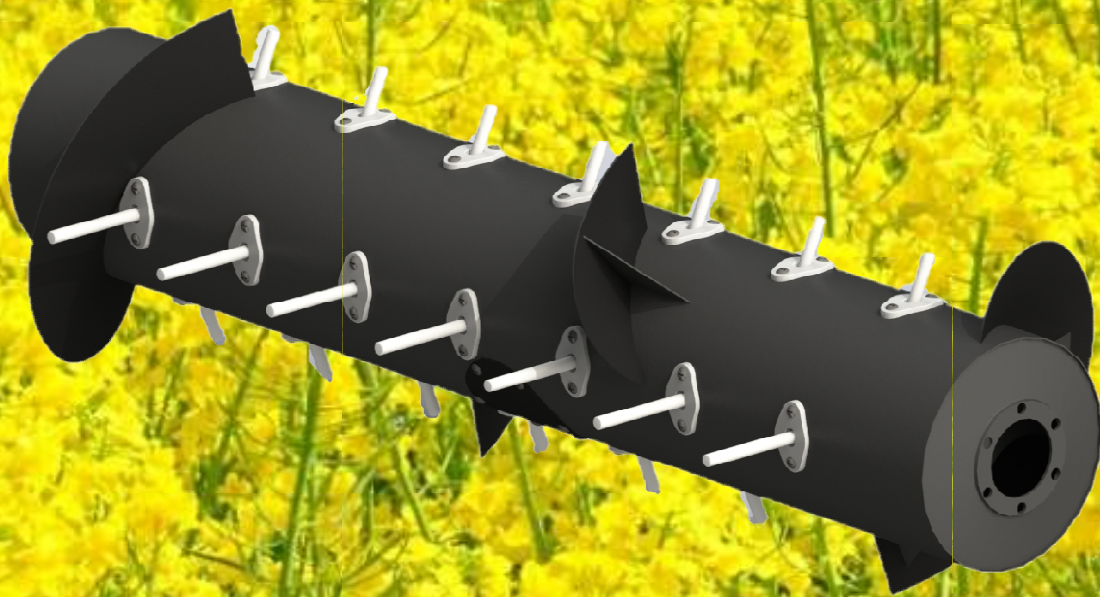


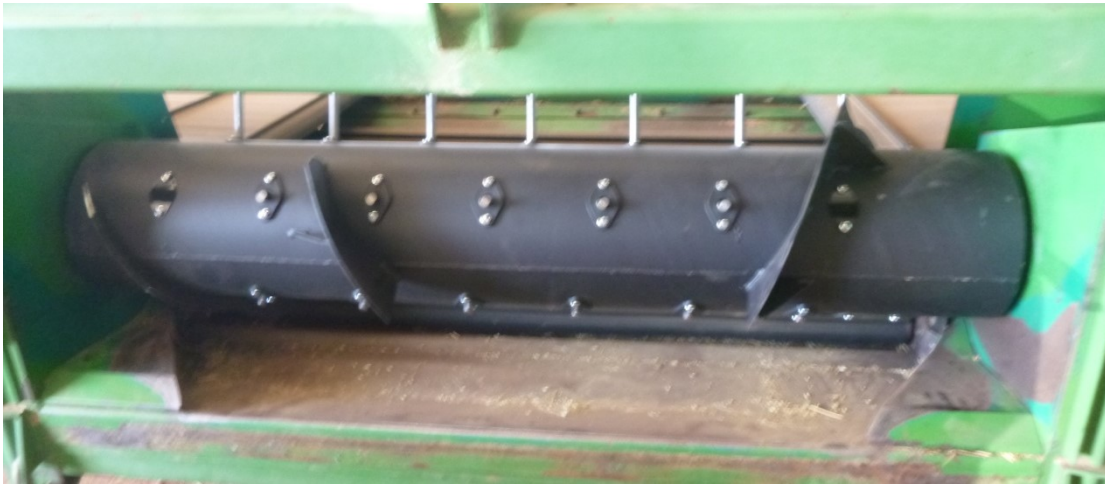
TURBODRUM

Installation Instructions

920/930/936D



Instructions for replacing the John Deere 925/930/936 Drum with the FeedDrum upgrade kit.



Phillbournes FeedDrum Fitted

Removing Original Drum

1. Remove PTO Shaft from Drive End (LHS)



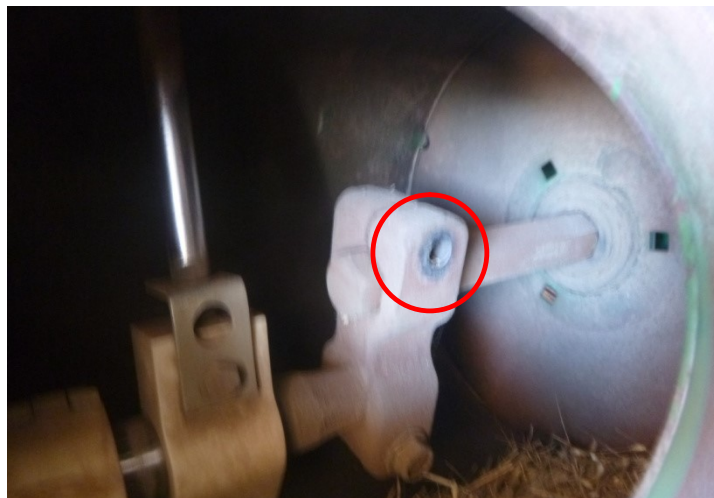
2. Remove Inspection Covers off Drum and support Drum at current height with wood blocks



3. Remove the 3 Bolts on Crank Arm Timing Plate (RHS)



4. Remove Bolt on Hex Shaft from inside Drum (RHS)



5. Remove Hex Shaft out of Crank End (RHS)



6. Remove Bearing on Drive End (LHS)

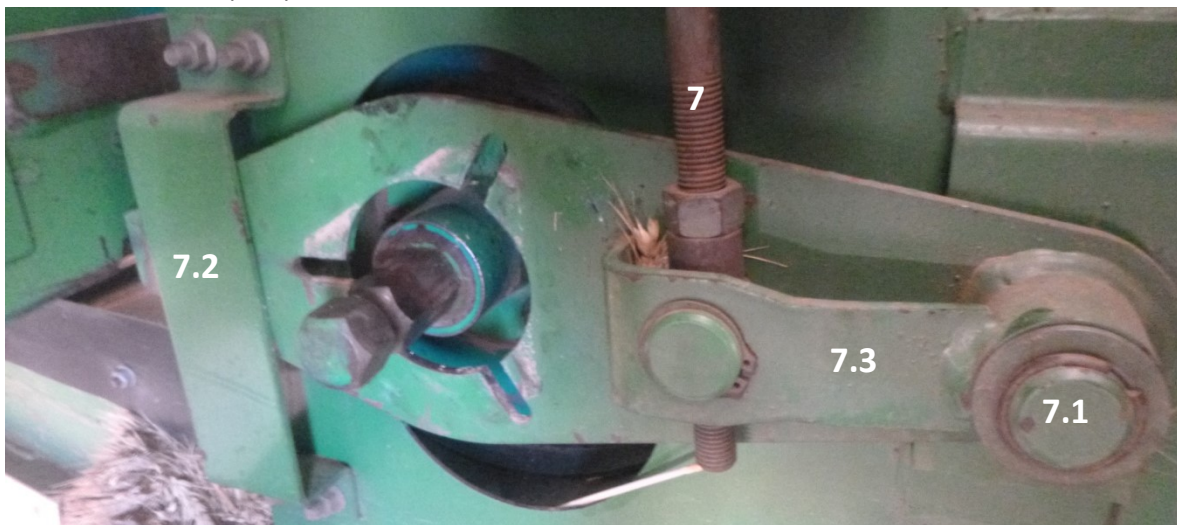


7. Remove Height Adjuster Bolt

7.1 Remove Circlip on main Pivot Arm

7.2 Remove Retaining Bracket at rear of Pivot Arm

7.3 Remove Pivot Arm (LHS)



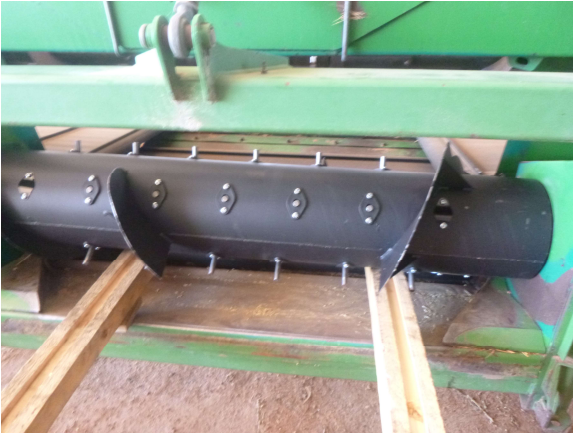
8. Remove Drive Hub (LHS)



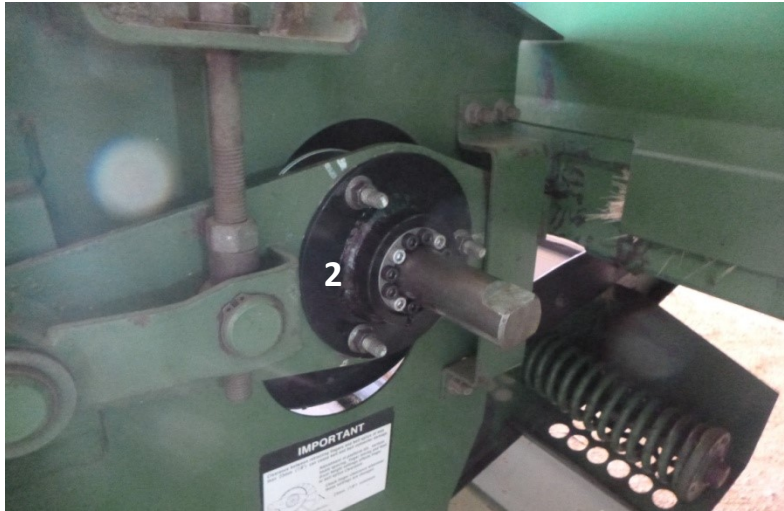
9. Remove Drum and roll it out

Fitting New FeedDrum

1. Fit FeedDrum RH Shaft End first



2. Fit New Finger Timing Plate at Crank End (RHS)



3. Remove Drive End Inspection Cover off New FeedDrum (LHS)



4. Fit Drive Hub from original drum using new 10mm x 35mm bolts from the inside



5. Reattach Pivot Arm (LHS)
 - 5.1 Fit Bearing to Hex Drive Hub (LHS)
 - 5.2 Reattach Retaining Bracket for Pivot Arm
 - 5.3 Reattach Circlip
 - 5.4 Fit Adjuster Bolt



6. Rotate Finger Timing Plate to set Fingers fully extended at 2 O'clock (Recommended)
7. Set Drum height
8. Refit Drive End Inspection Cover
9. Reattach PTO Shaft