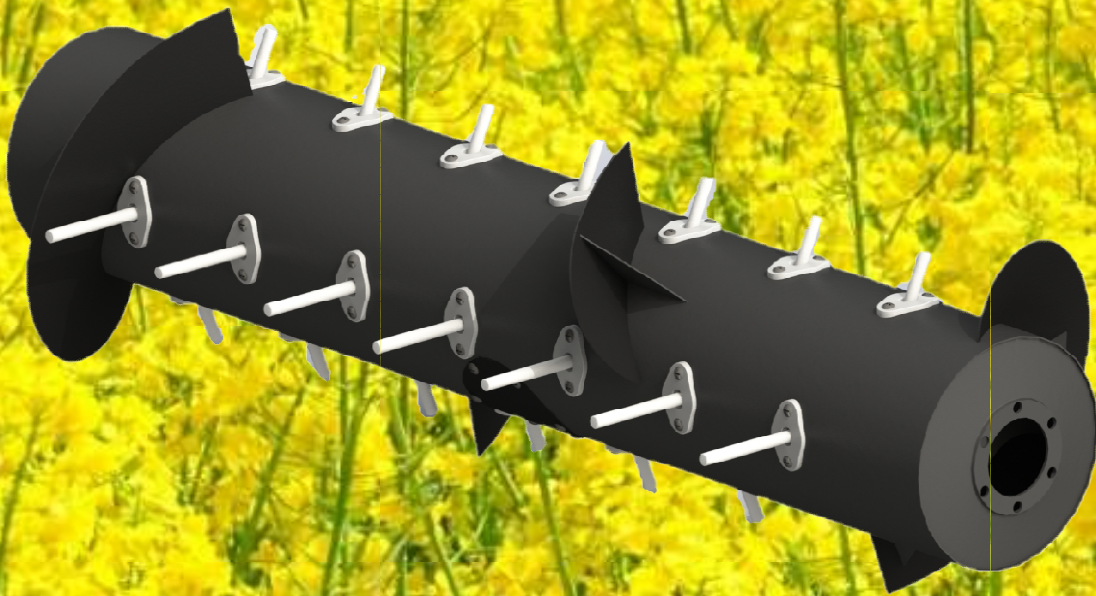


TURBODRUM

Installation Instructions

Honey Bee 94C



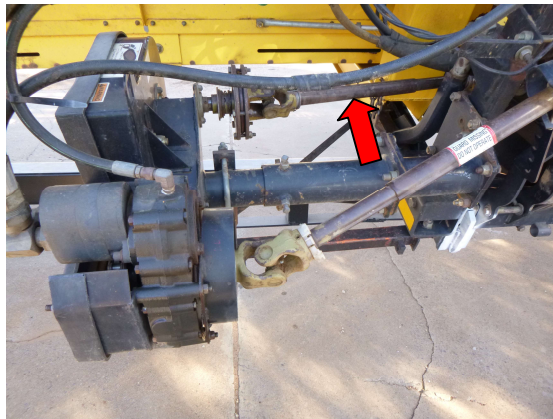
Instructions for replacing the Honey Bee 94C Drum with the Turbodrum upgrade kit.

Removing Original Drum

1. Take front off combine and put on comb trailer.



2. Remove covers from PTO shaft.



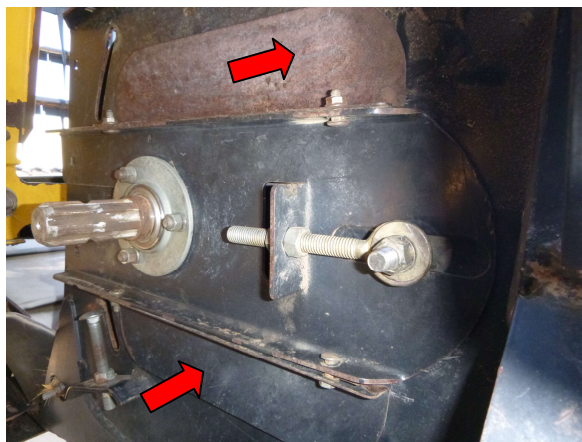
3. Remove drive shaft to drum Left Hand Side (LHS).



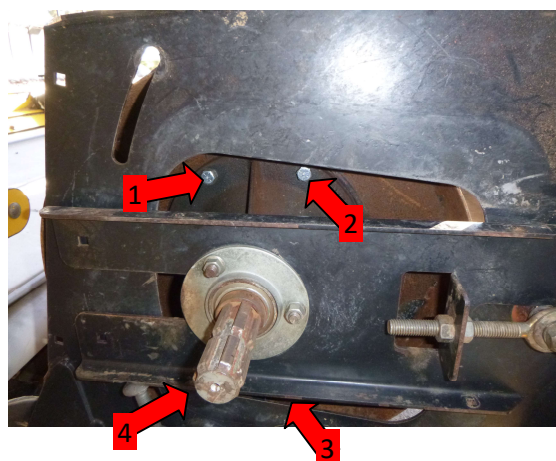
4. Remove finger timing adjuster Right Hand Side (RHS).



5. Remove top and bottom end guards LHS.



6. Line up 4 bolts holding hub on so they are accessible from the top and bottom of Left Hand (LH) arm.

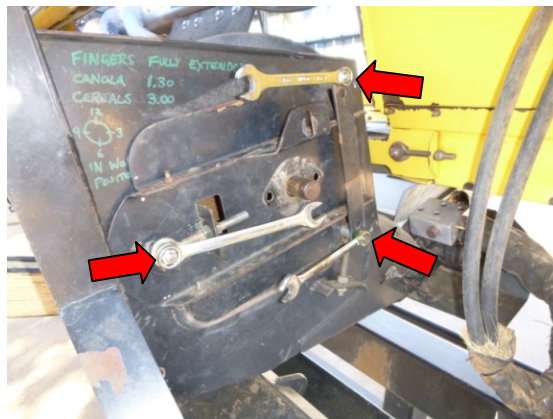


NB: Bolts 3 and 4 not shown in picture

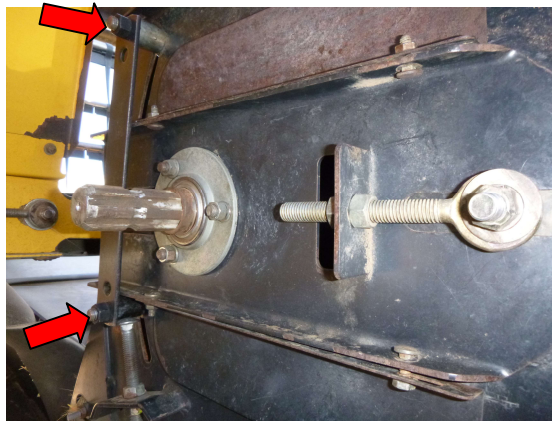
7. Take the weight of drum with blocks of wood.



8. Remove 3 mount bolts and nuts on Right Hand (RH) arm then remove strap and arm.



9. Remove bolts and nuts from guide strap on LHS and remove strap.



10. Removing hub and arm on LHS.

- a) Remove 4 bolts holding hub to drum and pivot bolt.
- b) Remove hub and arm

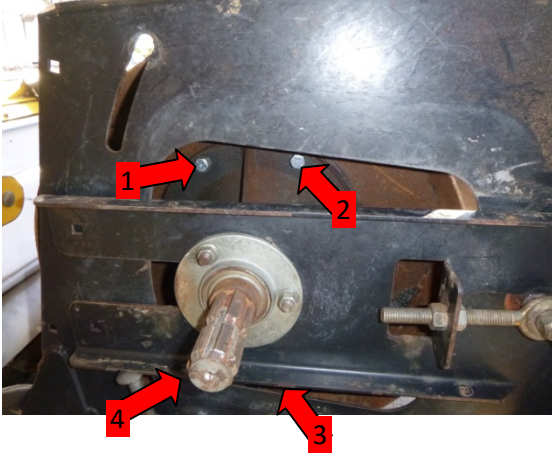


Figure A Remove 4 bolts

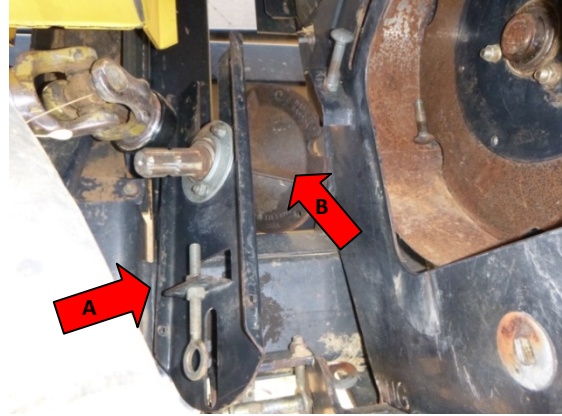
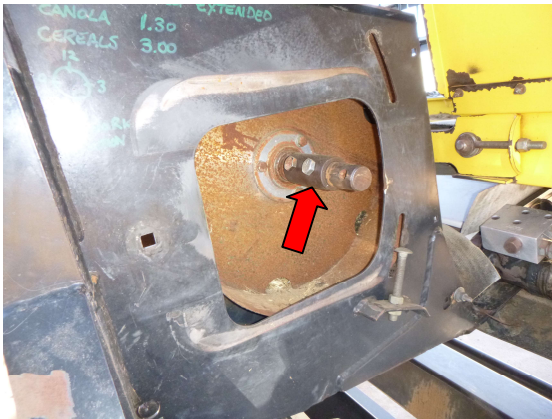
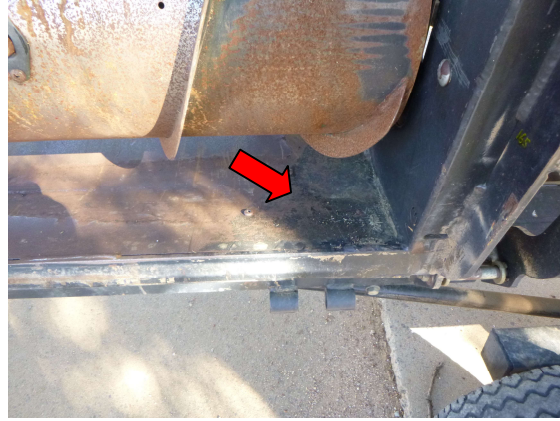


Figure B - Arm (A) and Hub (B) removed

11. Remove shaft extension RHS.



12.Remove lead in plates LHS & RHS.



13.Remove drum by rolling onto forklift.



Installing New Turbodrum

1. Put drum on forklift.



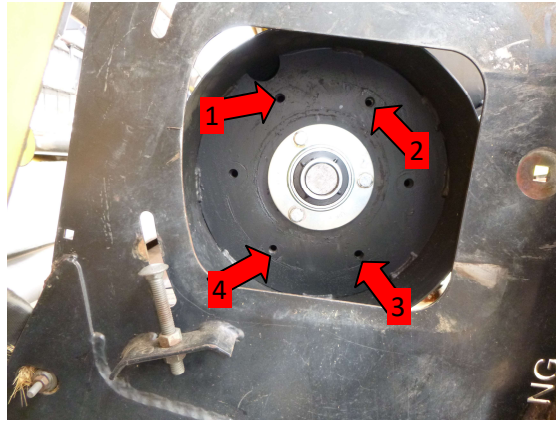
2. Roll drum into adaptor.



3. Fit mounting stub shaft to RHS and tighten bolts.



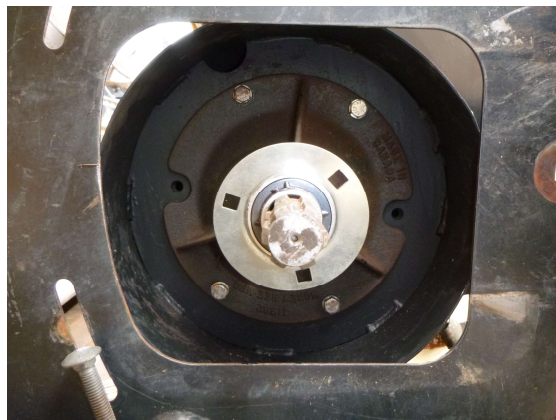
4. Turn drum to line up 4 bolt holes LHS as shown.



5. Put lengths of wood under drum to hold in place.



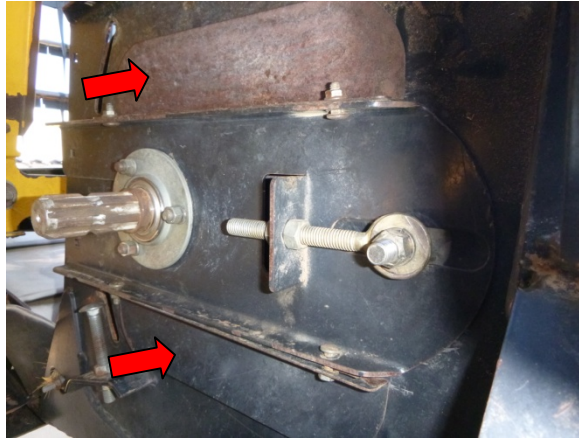
6. Fit drive hub to LHS with 4 bolts and tighten bolts.



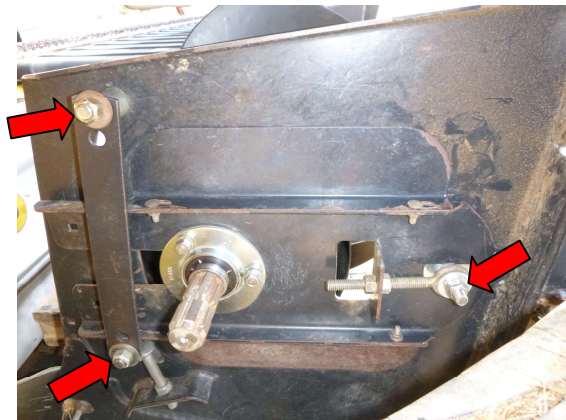
7. Fit arm to bearing hub on LHS and leave nuts finger tight.



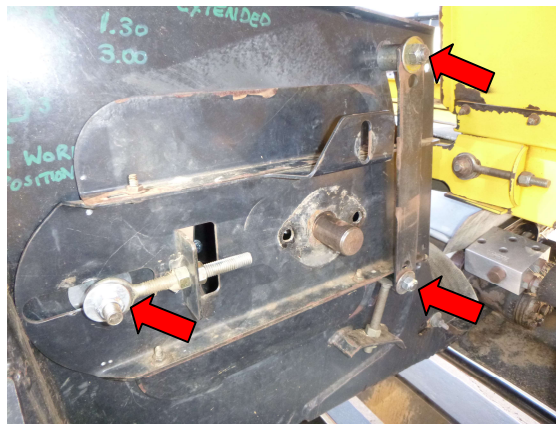
8. Fit top and bottom end guards.



9. Fit pivot and guide bolts to LH arm and tighten bolts.



10. Fit pivot and guide bolts to RHS.



11. Tighten bearing bolts on LHS.

12. Fit finger timing adjuster to RHS and tighten bolt.



13. Fit drive shaft to LHS.



14. Fit safety covers.