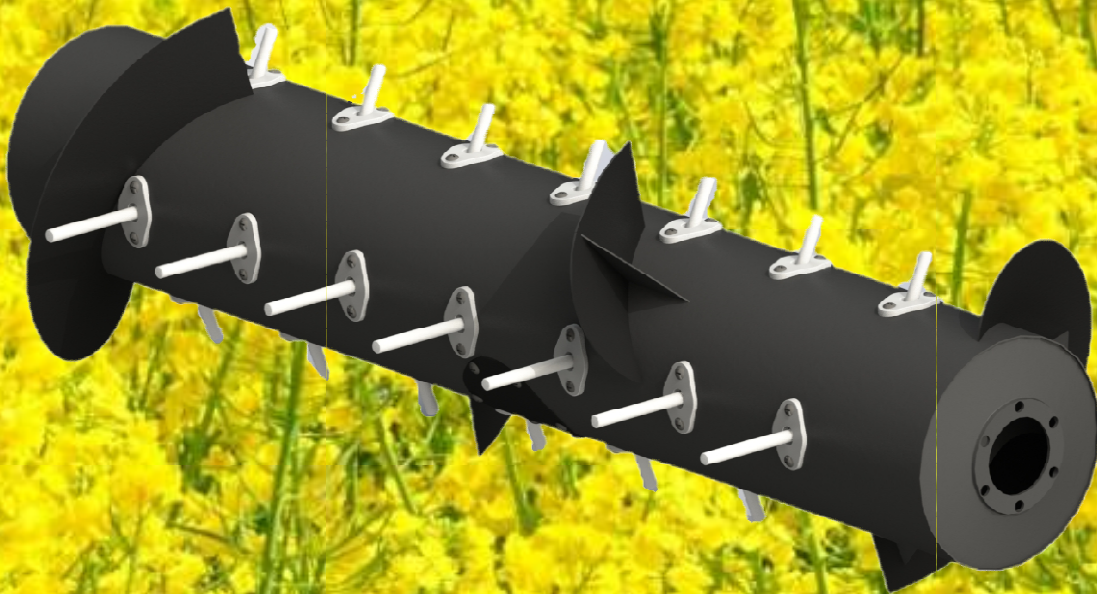


TURBODRUM

Installation Instructions

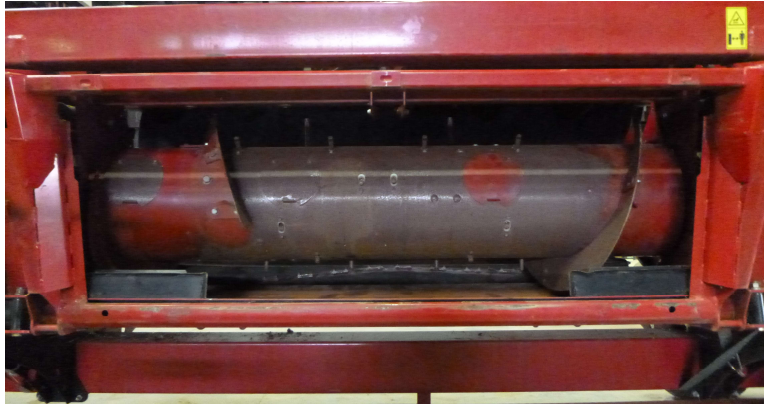
CNH



Instructions for replacing the CNH Feed Drum with the Turbodrum upgrade kit.

Removal Instructions

1. Lift reel up to maximum height and engage stops.



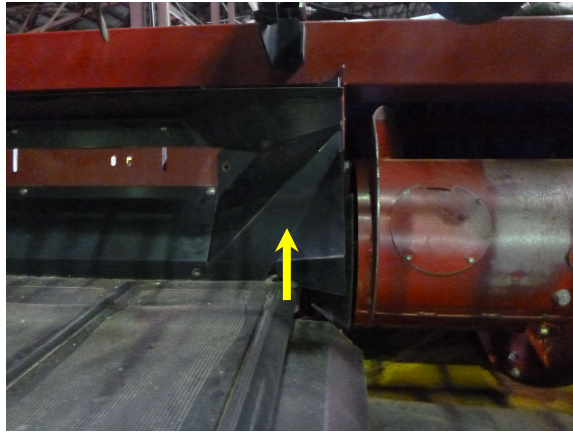
2. Open adapter fully (No5)



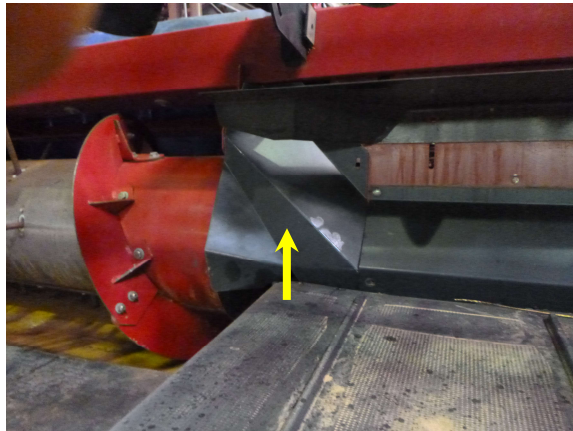
3. Remove drive shaft from LH side of drum



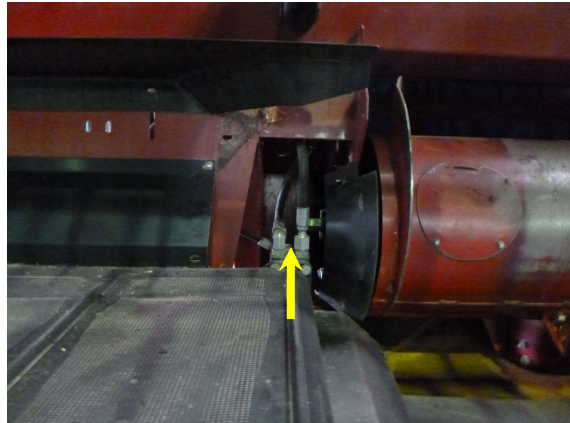
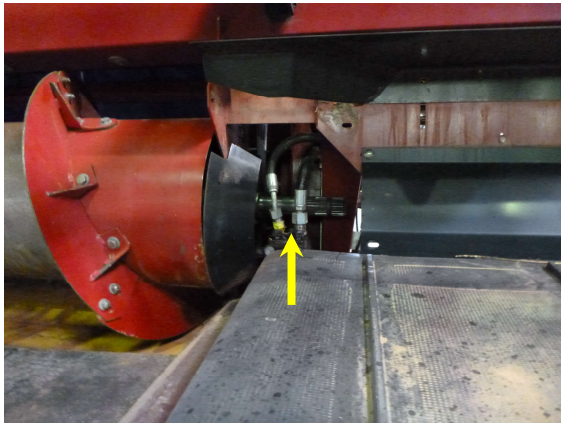
4. Remove cover from RH side of drum



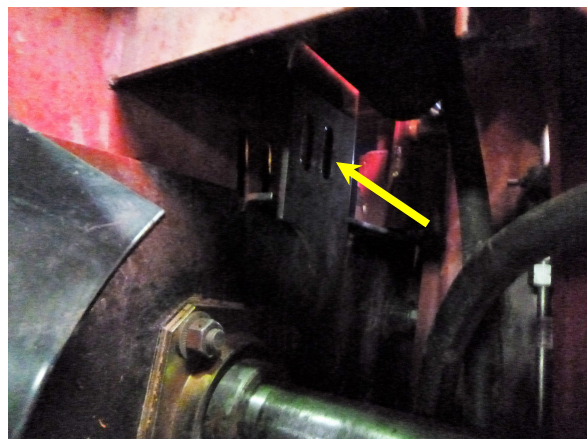
5. Remove cover from LH side of drum



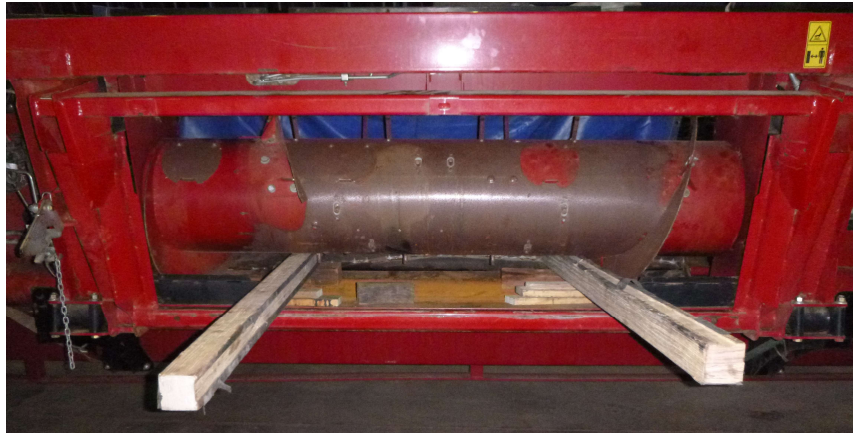
6. Remove hydraulic hoses from LH & RH belt hydramotors.



7. Mark position of top stoppers and remove from RH & LH side of drum.

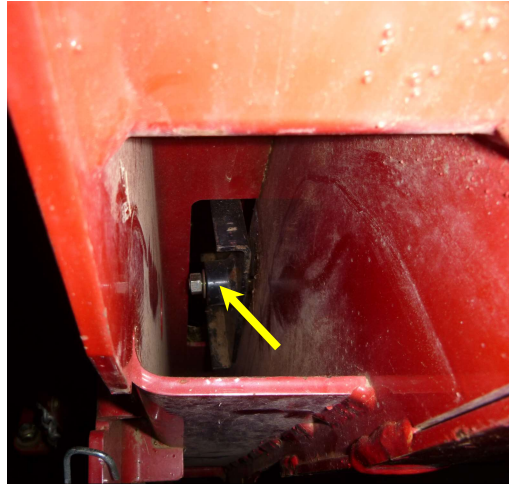
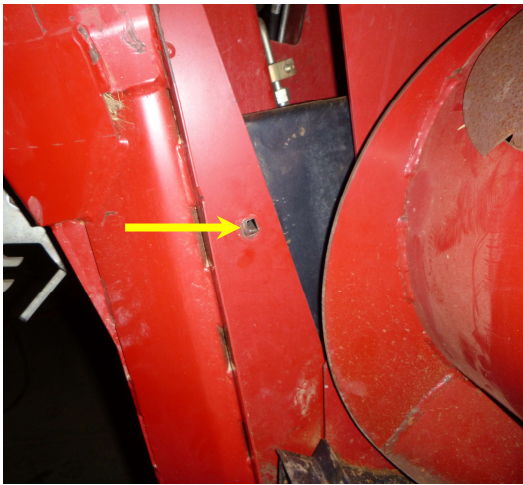


8. Put two lengths of wood under barrel.



9. Take the weight of the drum on the lengths of wood.

10. Remove LH main pivot bolt on arm.



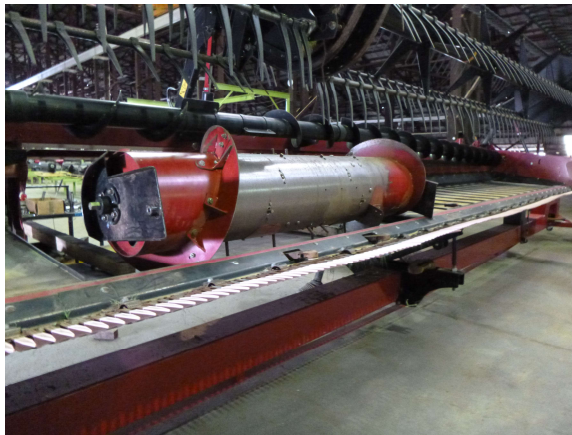
11. Remove RH main pivot bolt on arm.



12. Put ply or sheet metal on centre belt.

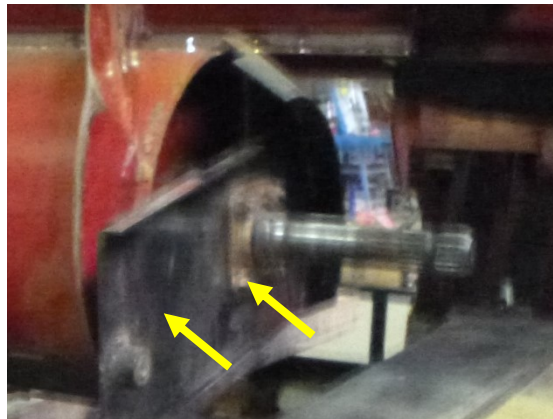


13. Roll drum forward toward front of front.



14. Pick up drum with forklift.

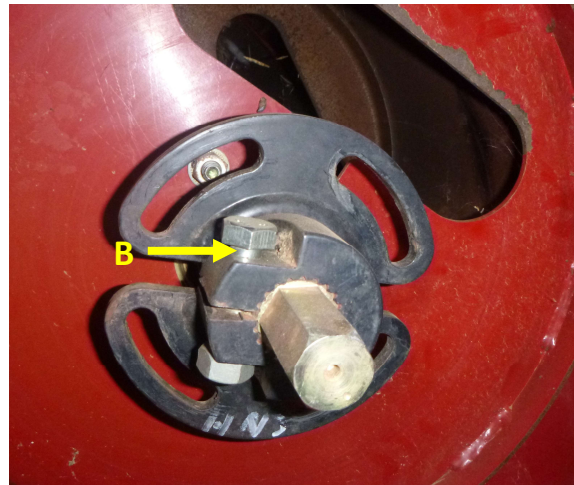
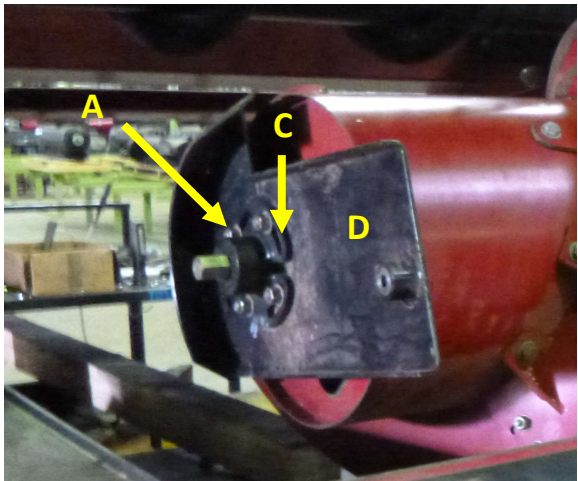
15. Remove the 4 bearing flange nuts and Mount Arm from the LH side drive shaft.



16. Remove 6 bolts on drive shaft hub and remove hub.



17.



- A) Remove 4 nuts on timing adjuster
- B) Remove 1 clamp bolt on timing adjuster
- C) Remove timing adjuster
- D) Remove RH side mount arm

Installation Instructions

1. Bolt drive shaft hub to Turbodrum on LH side (6 Bolts).



2. Fit bearing to LH mount arm and leave 4 flange nuts finger tight, then slide arm onto shaft.
3. Put RH side mount arm on shaft.
4. Fit new timing adjuster to RH shaft and rotate fully clockwise, then tighten the 4 Bolts.



5. Use fork lift and put Turbodrum on front of front.



6. Roll drum back keeping mount arm level.

7. Use blocks of wood to hold drum level.

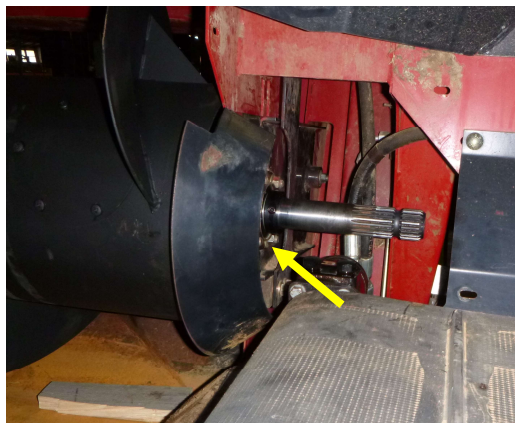
8. Fit LH and RH main pivot bolts and tighten.



9. Fit LH and RH top stopper bolts to old marks and tighten.



10. Tighten the 4 LH mount arm bearing flange bolts and ensure bearing is locked to shaft.



11. Check that Turbodrums turn free and clear of everything.

Setting Finger Timing

1. Turn Turbodrum until one row of fingers is at 3 o'clock and hold in place.

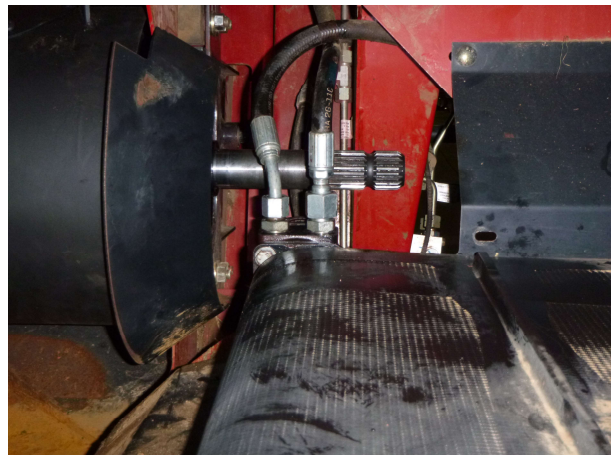


2. Turn crankshaft using flats on RH end of shaft until fingers are fully extended at 3 o'clock.

3. Tighten 8 allen key screws on shaft locking collar in a circular pattern going around 7 or 8 times to ensure they're fully tightened.



4. Fit hydraulic hoses to LH and RH side mat hydramotors.



5. Fit PTO drive shaft to LH side.



6. Fit cover to LH and RH side.



7. Ensure all nuts and bolts have been tightened.